



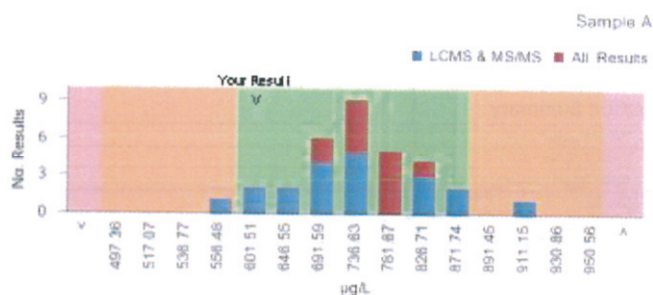
Lab ID TM0585
Scheme Therapeutic Drugs (TDM)
Analyte Clobazam
Round 160
Issued 03 March 2017

Results

| Sample | Method | Result | Unit | z/z' score |
|--------|--------------|--------|------|------------|
| A | LCMS & MS/MS | 564.00 | µg/L | -1.90 |
| B | LCMS & MS/MS | <10.00 | µg/L | |

Data Statistics

| Sample | A | B |
|---------------------------|-----------------------|---------------------|
| No. Results | 32 | 31 |
| No. Excluded Results | 0 | 0 |
| Mean | 716.23 µg/L | NaN µg/L |
| Median | 714.11 µg/L | NaN µg/L |
| Standard Deviation | 80.440 µg/L | NaN µg/L |
| Robust Standard Deviation | 74.699 µg/L | NaN µg/L |
| Result Range | 555.00 to 897.59 µg/L | 50.29 to 50.29 µg/L |



Note: The concentration value (x-axis) is the upper limit of a range of values.

Performance Statistics

| Sample | A | B |
|-------------------------------|-----------------------|------------|
| Assigned Value | 714.11 µg/L | Zero Spike |
| Uncertainty of Assigned Value | 16.51 µg/L | N/A µg/L |
| SDPA | 78.817 µg/L | NaN µg/L |
| Spike Value | 737.1 µg/L | 0.00 µg/L |
| Satisfactory Range | 556.48 to 871.74 µg/L | N/A |
| Satisfactory z/z' scores | 93.8% | 0.0% |
| Questionable z/z' scores | 6.3% | 0.0% |
| Unsatisfactory z/z' scores | 0.0% | 0.0% |

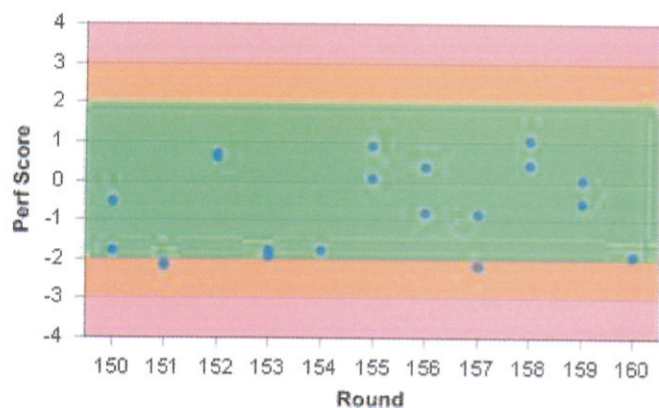
Last 9 Performance Scores

| Sample A - Round | 152 | 153 | 154 | 155 | 156 | 157 | 158 | 159 | 160 |
|------------------|------|-------|-------|------|------|-------|------|-------|-------|
| LCMS & MS/MS | 0.70 | -1.91 | -1.76 | 0.05 | 0.37 | -0.86 | 1.05 | -0.58 | -1.90 |

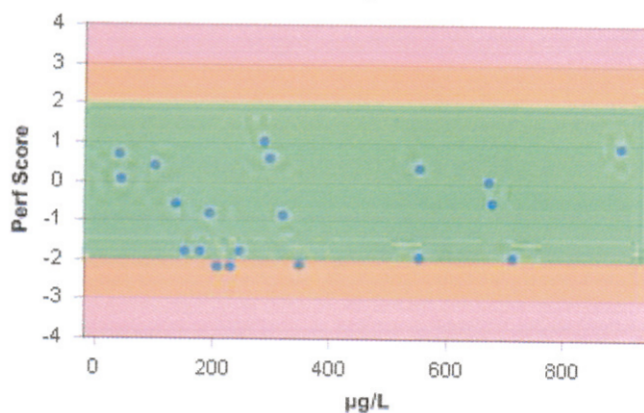
| Sample B - Round | 152 | 153 | 154 | 155 | 156 | 157 | 158 | 159 | 160 |
|------------------|------|-------|-----|------|-------|-------|------|------|-----|
| LCMS & MS/MS | 0.62 | -1.76 | ZS | 0.92 | -0.82 | -2.16 | 0.40 | 0.04 | ZS |

< or > = Less/Greater than result returned, no assessment given. ZS = Zero Spiked Sample, no assessment given. Blank = No result submitted

Performance Score by Round



Performance Score by Concentration





Lab ID TM0585
Scheme Therapeutic Drugs (TDM)
Analyte Norclobazam
Round 160
Issued 03 March 2017

Results

| Sample | Method | Result | Unit | z/z' score |
|--------|--------------|----------|------|------------|
| A | LCMS & MS/MS | 3,750.00 | µg/L | -1.06 |
| B | LCMS & MS/MS | <-10.00 | µg/L | |

Data Statistics

| Sample | A | B |
|---------------------------|---------------------------|-----------------------|
| No. Results | 24 | 23 |
| No. Excluded Results | 0 | 0 |
| Mean | 4,087.91 µg/L | NaN µg/L |
| Median | 4,252.19 µg/L | NaN µg/L |
| Standard Deviation | 481.130 µg/L | NaN µg/L |
| Robust Standard Deviation | 321.485 µg/L | NaN µg/L |
| Result Range | 3,005.00 to 4,832.80 µg/L | 103.50 to 103.50 µg/L |

Performance Statistics

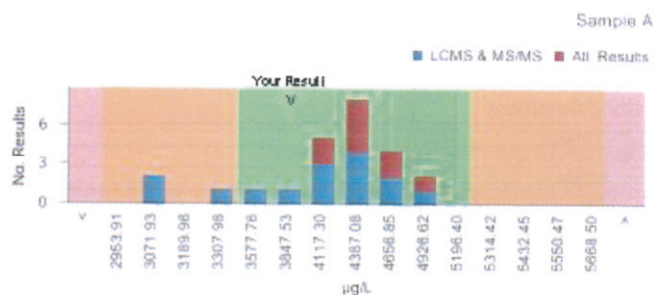
| Sample | A | B |
|-------------------------------|---------------------------|------------|
| Assigned Value | 4,252.19 µg/L | Zero Spike |
| Uncertainty of Assigned Value | 82.03 µg/L | N/A µg/L |
| SDPA | 472.103 µg/L | NaN µg/L |
| Spike Value | 3668.66 µg/L | 0.00 µg/L |
| Satisfactory Range | 3,307.98 to 5,196.40 µg/L | N/A |
| Satisfactory z/z' scores | 87.5% | 0.0% |
| Questionable z/z' scores | 12.5% | 0.0% |
| Unsatisfactory z/z' scores | 0.0% | 0.0% |

Last 9 Performance Scores

| Sample A - Round | 152 | 153 | 154 | 155 | 156 | 157 | 158 | 159 | 160 |
|------------------|------|-------|-------|-------|------|------|------|-------|-------|
| LCMS & MS/MS | 0.48 | -1.15 | -1.06 | -0.06 | 0.74 | 0.08 | 1.19 | -0.74 | -1.06 |

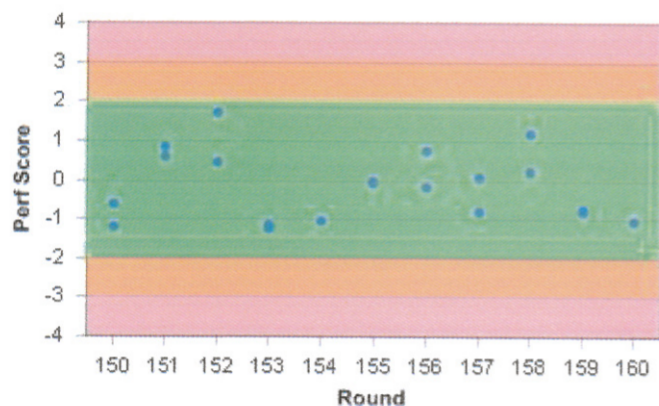
| Sample B - Round | 152 | 153 | 154 | 155 | 156 | 157 | 158 | 159 | 160 |
|------------------|------|-------|-----|-------|-------|-------|------|-------|-----|
| LCMS & MS/MS | 1.72 | -1.23 | ZS | -0.01 | -0.15 | -0.80 | 0.20 | -0.79 | ZS |

< or > = Less/Greater than result returned, no assessment given. ZS = Zero Spiked Sample, no assessment given. Blank = No result submitted



Note: The concentration value (x-axis) is the upper limit of a range of values.

Performance Score by Round



Performance Score by Concentration

